



# House Select Committee on Strategic Transportation Planning and Long Term Funding Solutions

March 28, 2016

# US Highway 70

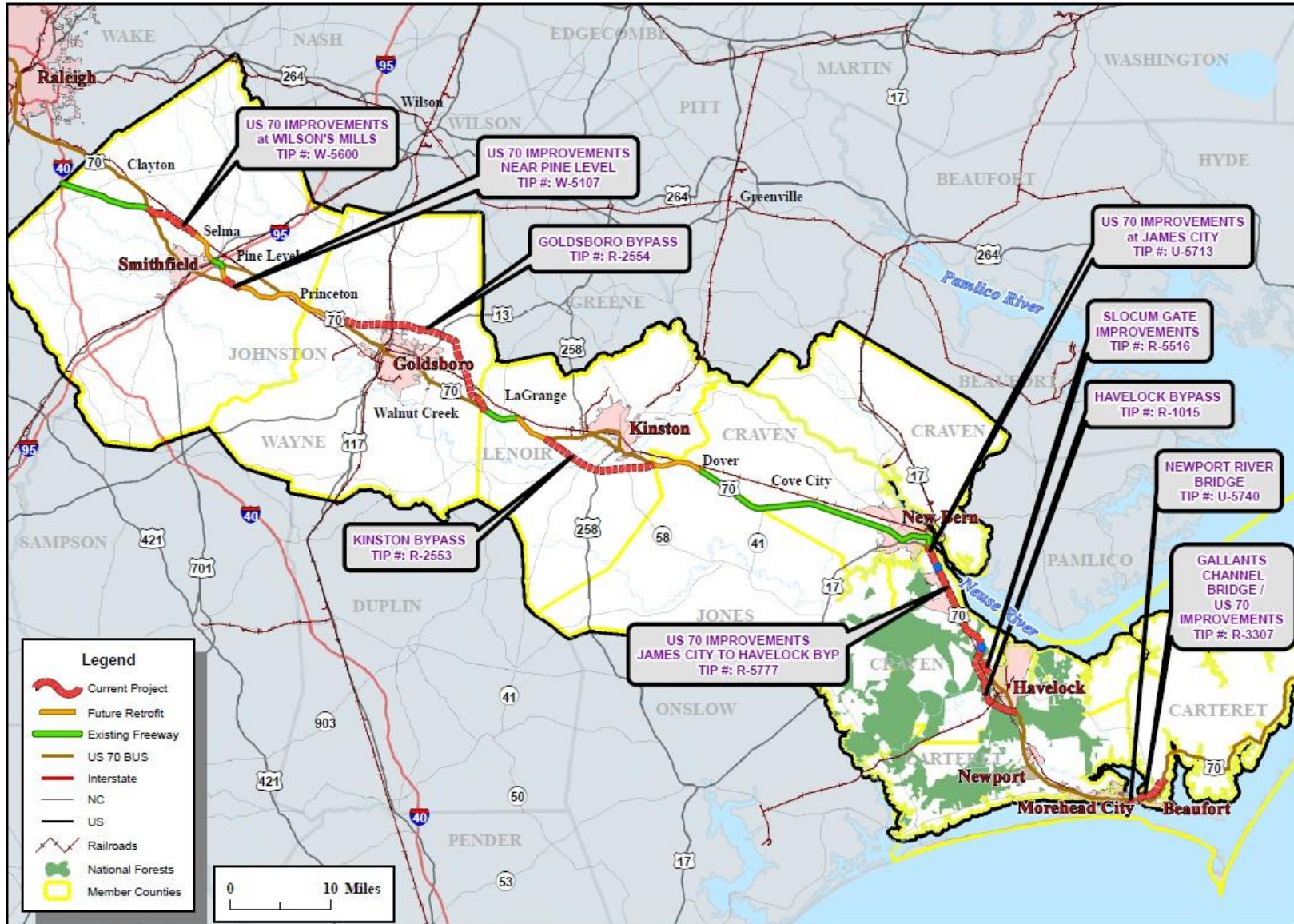
- Main highway route from I-40 & I-95 to the Global TransPark and the Port of Morehead City
- ~ 140 miles from I-40 to the Port of Morehead City
- 10 TIP projects currently along the route
- ~ 65 Traffic Lights between I-40 and the Port

# Highway 70 Corridor Commission



- Established in October 2005
- Participants from Johnston, Wayne, Lenoir, Jones, Craven & Carteret Counties
- County & Municipal Elected Officials and NCDOT Board Members

# US 70 Improvement Projects



NORTH CAROLINA DEPARTMENT  
OF TRANSPORTATION  
DIVISION OF HIGHWAYS  
PROJECT DEVELOPMENT AND  
ENVIRONMENTAL ANALYSIS UNIT

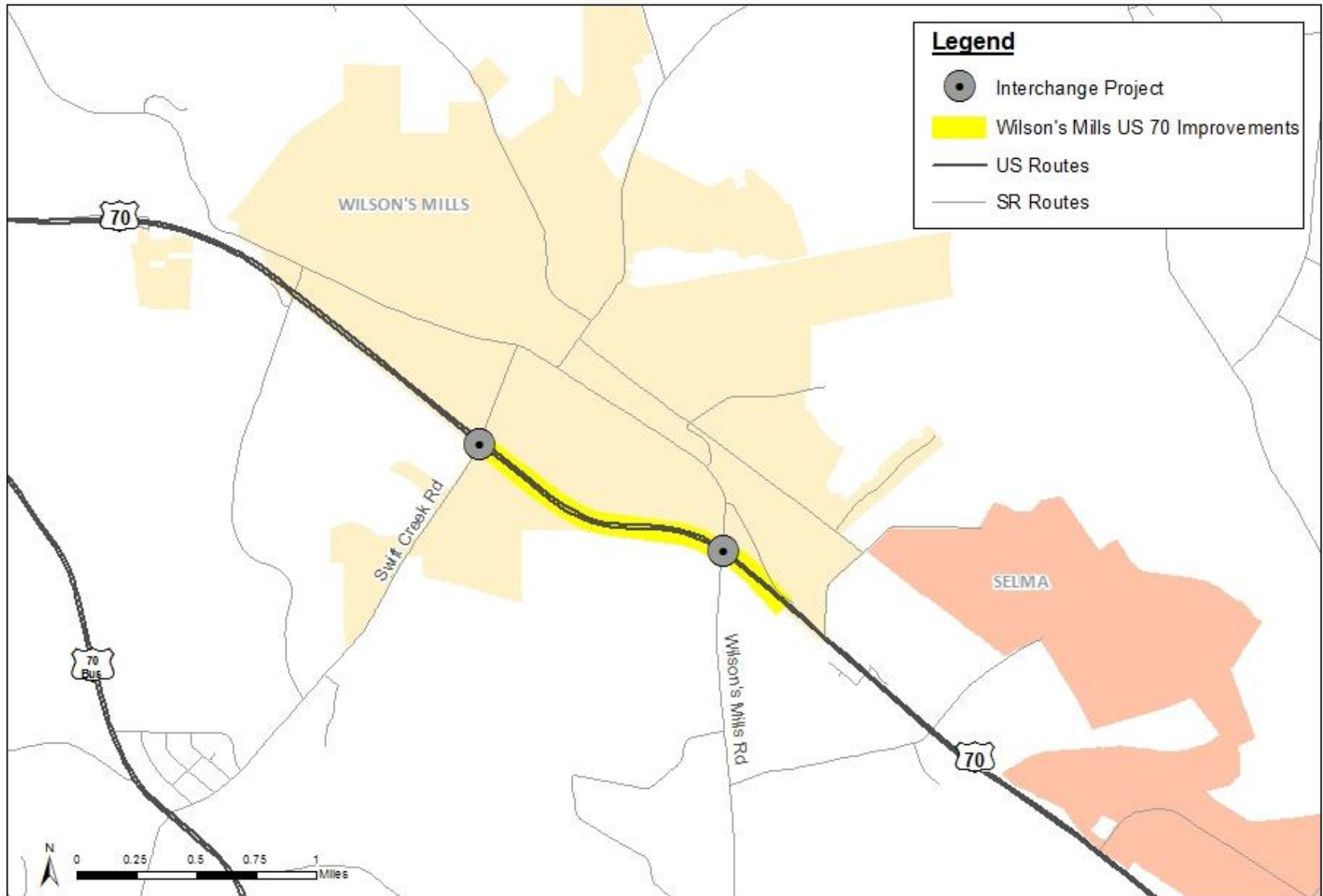
US 70 CORRIDOR  
NC DOT PROJECT LOCATIONS  
WAKE, JOHNSTON, WAYNE, LENOIR,  
JONES, CRAVEN, CARTERET COUNTIES



Date:  
January 2016

Figure  
1

# W-5600 Wilson's Mills



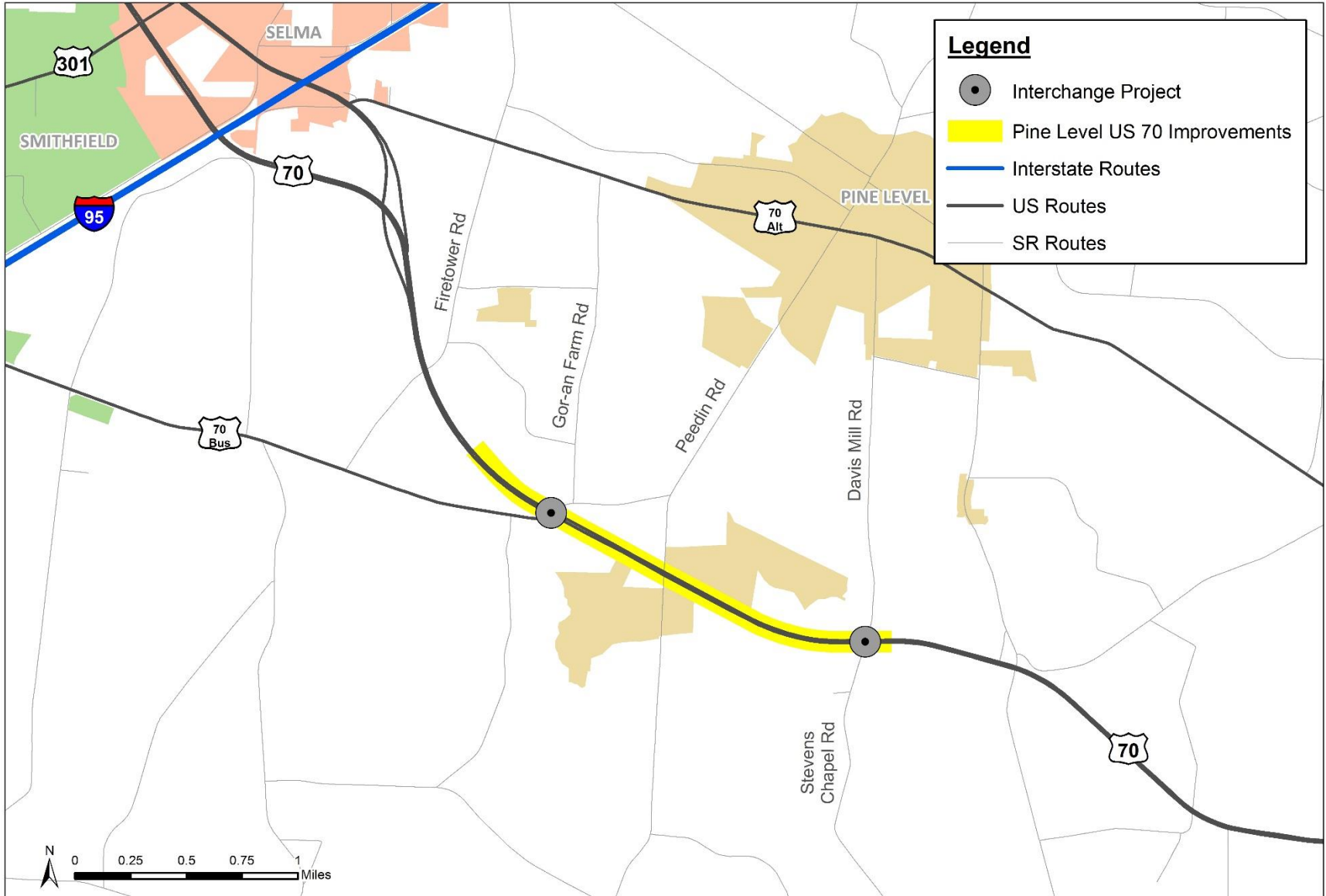
# W-5600 Wilson's Mills

- Convert to Freeway with Interchanges at Swift Creek Road and Wilson's Mills Road

Length	Cost	ROW	Construction
1.5	\$ 30,914,000	2018	2020



# W-5107 Pine Level



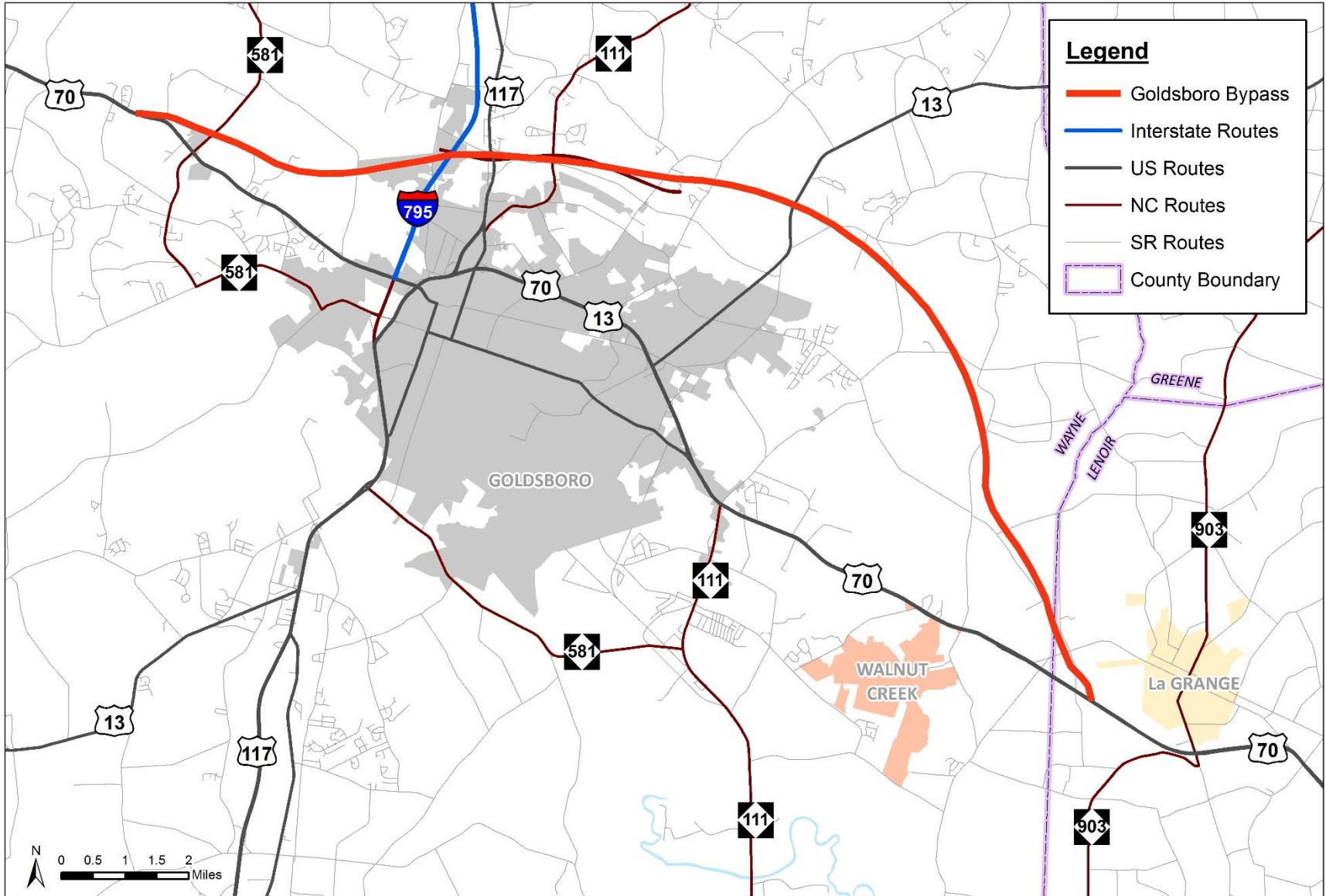
# W-5107 Pine Level

- Median cross-over closures and upgrades of two intersections to interchanges

Length	Cost	ROW	Construction
2.2	\$ 25,494,000		20% Complete



# R-2554 Goldsboro Bypass

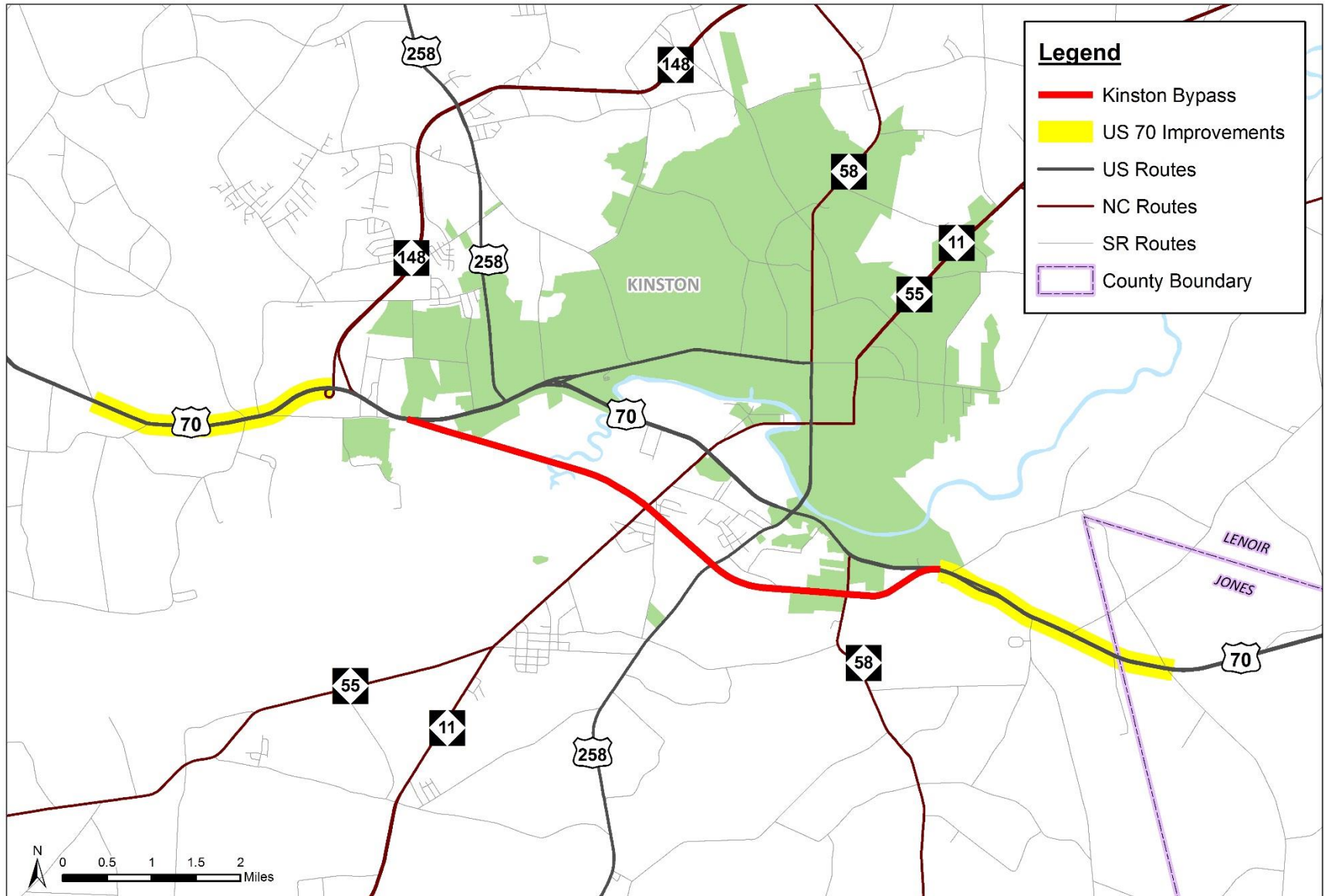


# R-2554 Goldsboro Bypass

- Construct four lane divided freeway on new location

Length	Cost	ROW	Construction
20.5	\$ 365,439,000		91% Complete

# R-2553 Kinston Bypass



# R-2553 Kinston Bypass

- Upgrade roadway to freeway with part on new location

Length	Cost	ROW	Construction
18.67	\$ 373,184,000		Post Year

# U-5713 James City Improvements



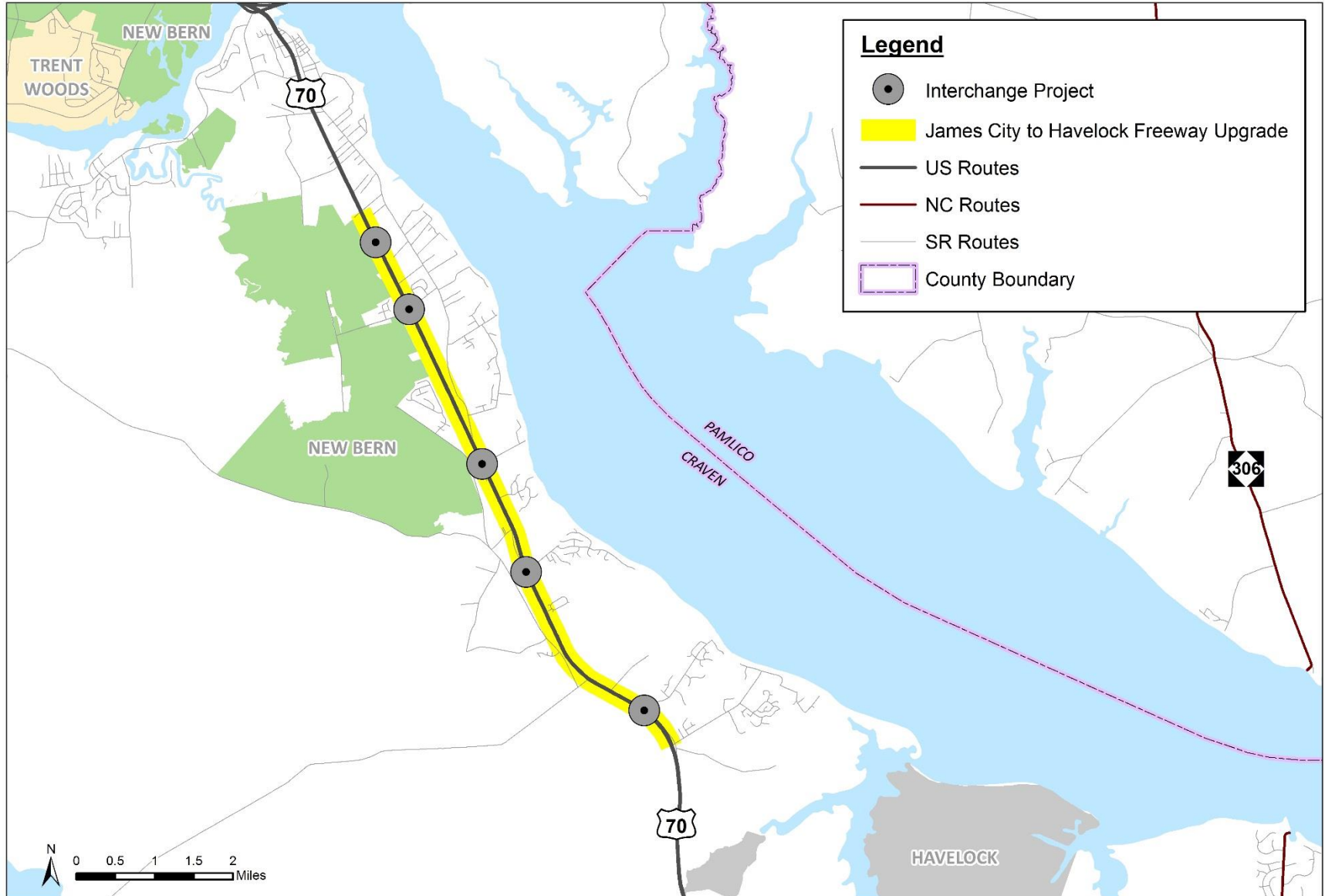
# U-5713 James City Improvements

- Upgrade roadway to freeway and upgrade two intersections to interchanges

Length	Cost	ROW	Construction
2.5	\$ 67,000,000	2021	2021



# R-5777 James City to Havelock Freeway Upgrade



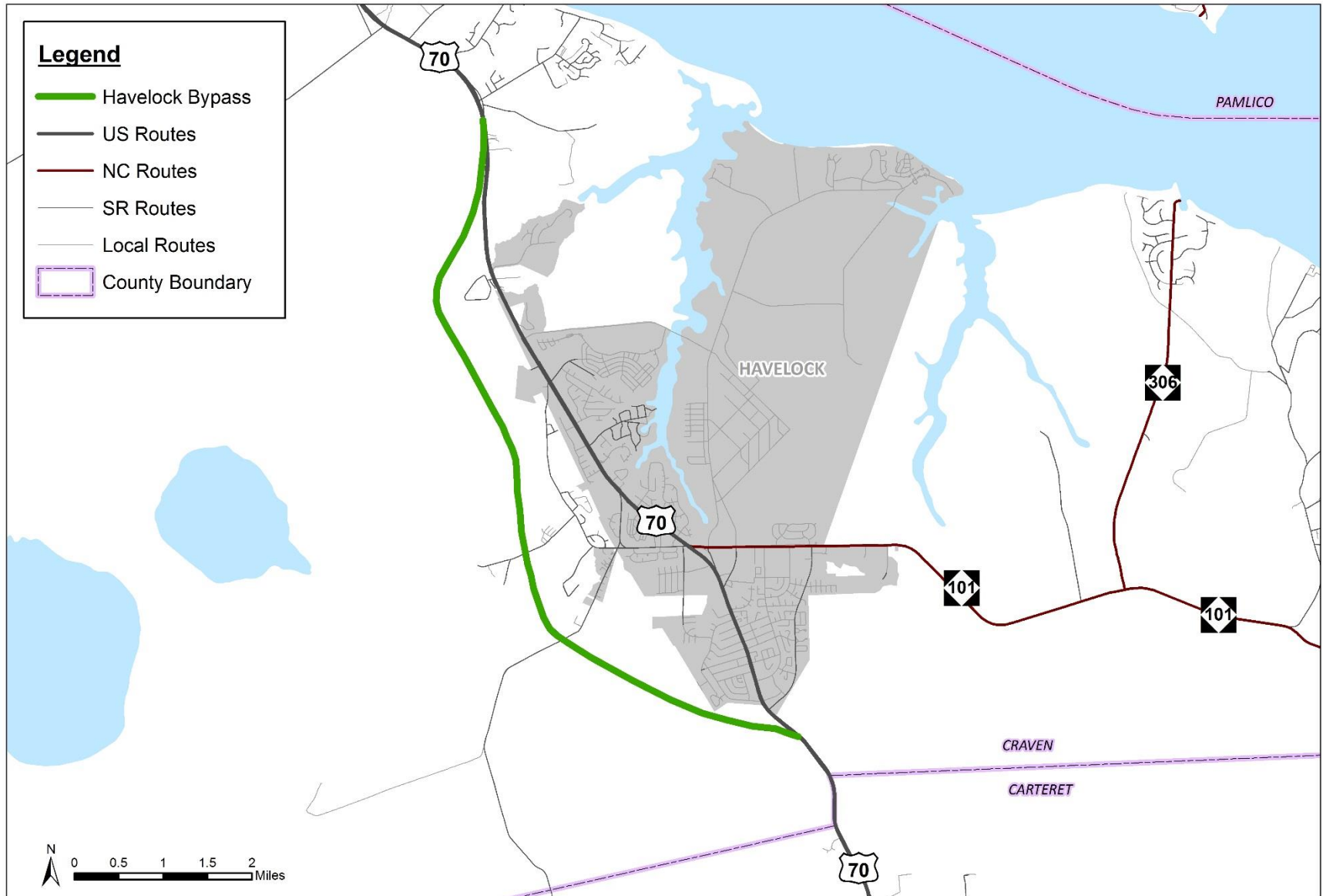


# R-5777 James City to Havelock Freeway Upgrade

- Upgrade existing roadway to freeway and upgrade five intersections to interchanges

Length	Cost	ROW	Construction
8.6	\$ 181,300,000	2025	Post Year

# R-1015 Havelock Bypass

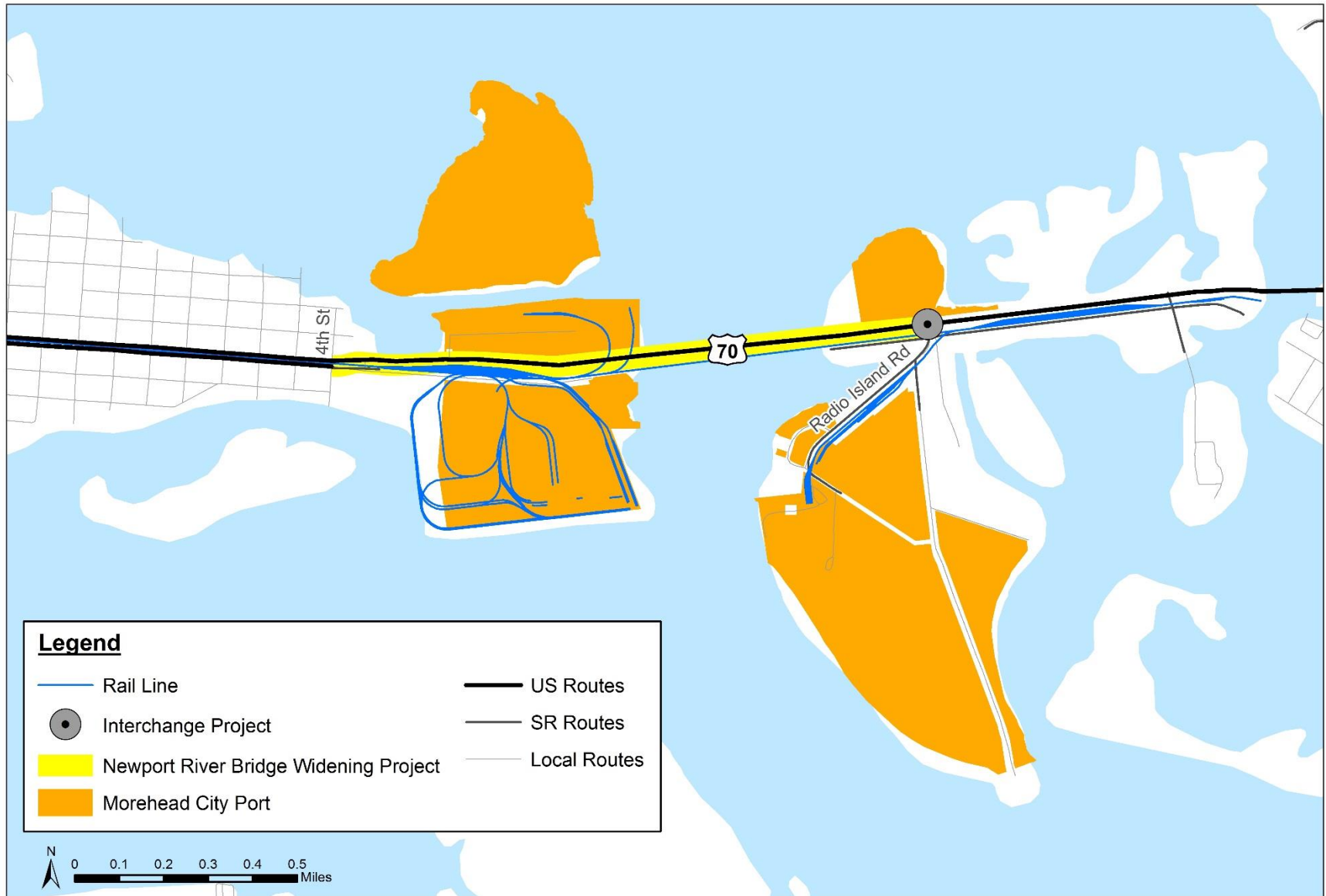


# R-1015 Havelock Bypass

- Construct multi-lane facility on new location

Length	Cost	ROW	Construction
10.1	\$ 221,262,000	2016	2018

# U-5740/U-5876 Newport River Bridge Widening



# U-5876/U-5740 Newport River Bridge Widening

- Widen to multi-lanes from 4th Street to Radio Island Road with an interchange at Radio Island Road (U-5876)
- Widen and improve Newport River Bridge (U-5740)

	Length	Cost	ROW	Construction
U-5876	1.4	\$ 71,512,000	2024	2024
U-5740	0.7	\$ 60,081,000	2022	2024

# R-3307 Gallants Channel Bridge



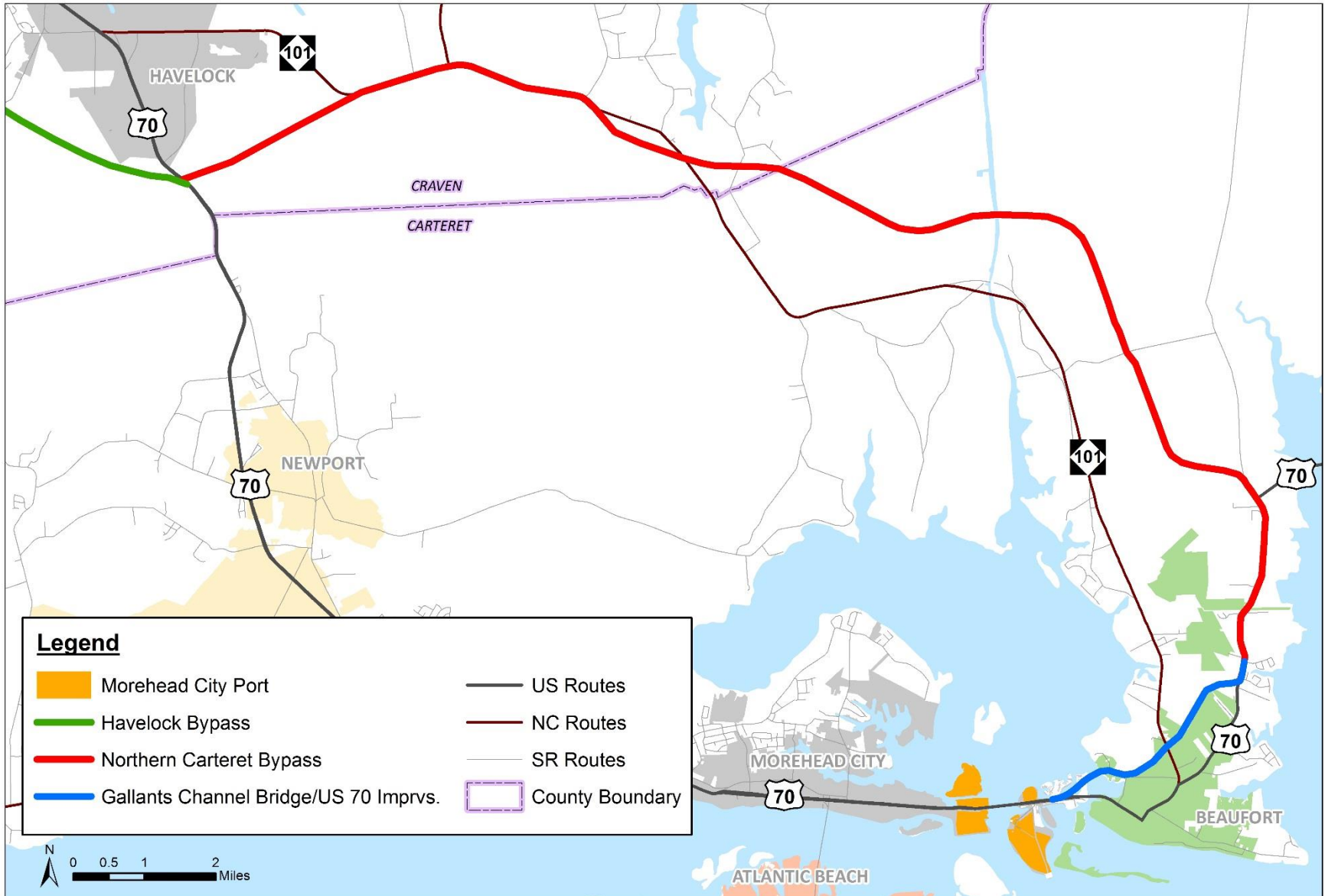
# R-3307 Gallants Channel Bridge

- Construct multi lane roadway from Radio Island to Olga Road with a new Gallant's Channel Bridge

Length	Cost	ROW	Construction
3.7	\$ 118,348,000		45% Complete



# R-4431 Northern Carteret Bypass



# R-4431 Northern Carteret Bypass

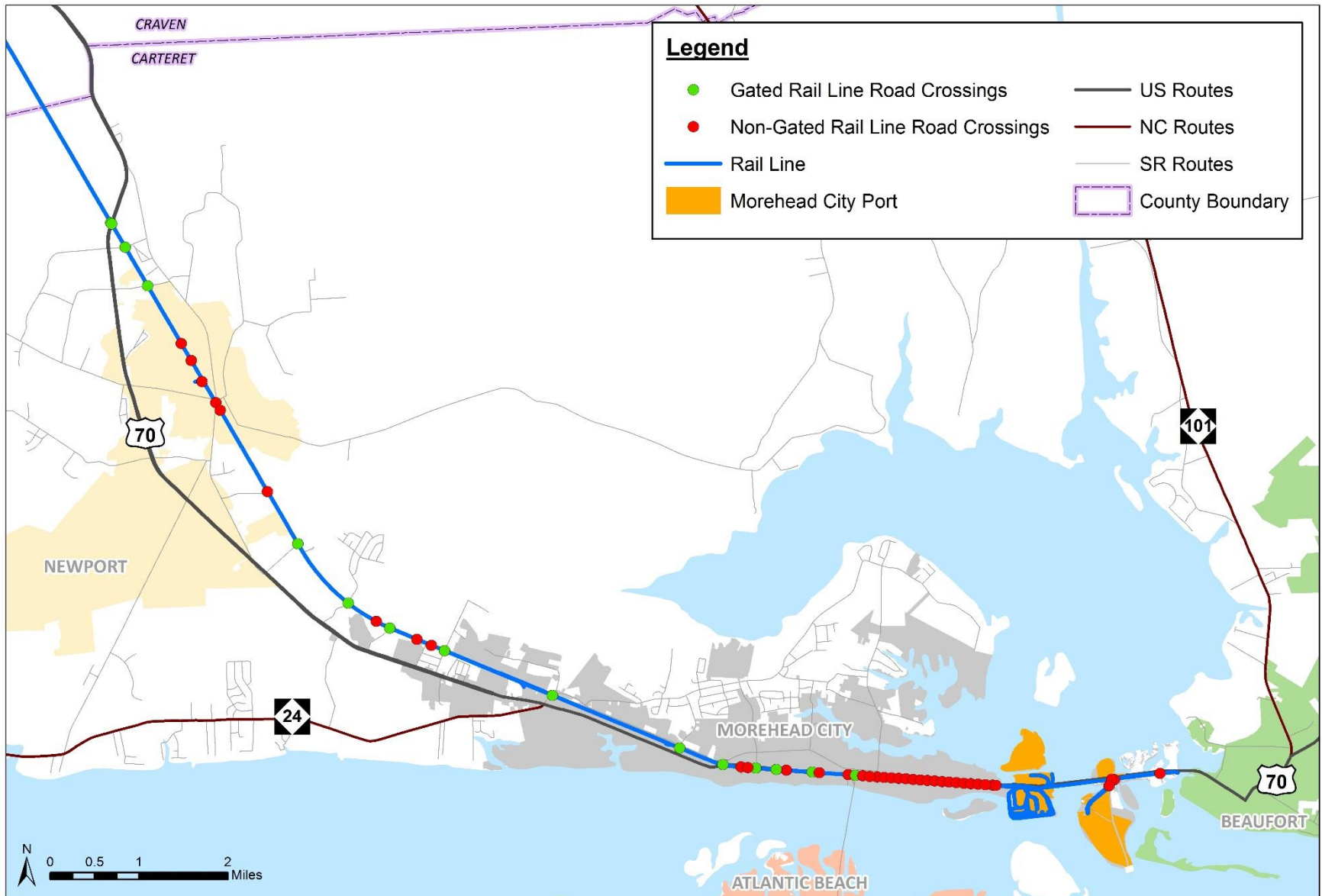
- New location Freeway from Havelock Bypass to Gallants Channel Bridge Project
- Crosses Intracoastal Waterway (ICW)

Length	Cost	ROW	Construction
20.95	\$ 468,700,000	N/A	Post year

# Rail in Carteret County

- Single Rail line to the Port
  - ~ 16 miles of rail in Carteret County
  - 52 road crossings in Carteret County
    - 14 gated crossings
    - 38 non-gated crossings
- Owned by North Carolina Railroad Company leased to Norfolk Southern
- Operates as a Shortline on the Port

# Existing Rail in Carteret County



# Rail Improvement Studies for MHC Port

- Radio Island Traffic Assessment (September 2006)
- Track Relocation Feasibility Study Havelock to Morehead City (March 2007)
- Statewide Logistics Plan for North Carolina (May 2008)
- Regional Growth Management Plan (October 2009)
- NC State Ports Authority Port Business Case Project (February 2011)
- Seven Portals Study: An Investigation of How Economic Development Can be Encouraged in North Carolina Through Infrastructure Investment – Master Report (December 2011)
- Seven Portals Study: An Investigation of Economic Development in North Carolina Through Logistics Villages – Eastern Region Report (December 2011)

# Rail Improvement Studies for MHC Port

- North Carolina Maritime Strategy Final Report (June 2012)
- Final Report of the Governor's Logistics Task Force (June 2012)
- North Carolina Statewide Transportation Plan (August 2012)
- North Carolina State Ports Authority Strategic Plan (November 2012, Draft)
- Economic Contribution of the North Carolina Ports (November 17, 2014)
- North Carolina Eastern Infrastructure Improvement Study (January 2015)
- 2015 Strategic Plan of the North Carolina State Ports Authority (February 26, 2015)
- North Carolina Comprehensive State Rail Plan (August 2015)

# Major Points from Various Studies

- Infrastructure challenge is primarily due to rail and road traffic conflicts through the town
- Port is accessible by truck and rail but scaling up volume will create congestion problems unless a bypass around the developed area is created
- The large difference in the NC Port facilities' output and employment contribution compared to that of other South Atlantic ports mainly reflects differences in existing transportation infrastructure
- Interstate grade highway access is a critical infrastructure component for ports



# Track Relocation Feasibility Study Havelock to Morehead City (March 2007)

- Examines eight corridors for relocating the railroad track
- Evaluated the corridors based on engineering principles, environmental impacts, community concerns, and economic development potential
- Considered improvements to the existing rail alignment
- Concludes that a rail relocation alternative is not economically feasible at the time
- If the Port experiences significantly higher rail business, then the relocation alternative should be investigated further

# Rail Improvement Studies for MHC Port

- Conclusion:

Based on this review of plans, reports and studies which discuss rail infrastructure in the Port of Morehead City area, no specific project has been overall recommended or endorsed. However, these reviewed documents all indicate that a need for improving rail access to the Port exists.

# Rail Projects in Carteret County

- R150089: Construct new location rail line from the Port of Morehead City across the Newport River to Havelock

	ROW	Construction	Total
New Location Rail	\$ 73,791,025	\$ 351,385,834	\$ 425,176,859

# Questions

